



DCINVERTER range

**SX DCI Ceiling edge
mounted split units**

INVERTER RANGE

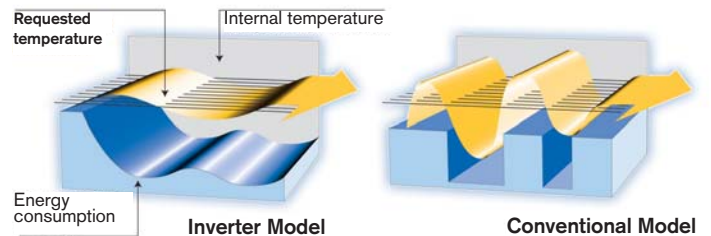
Never has technology gone so far to provide optimum comfort and simplify the installation process. With its refined and fluid lines, the **SX DCI** brings together the new aesthetic trends. Its "High Tech" control panel and exceptional slimness mean that it can blend in harmoniously with all décor styles, and has a rare degree of discretion and elegance that satisfy the new expectations in terms of living habitats and the tertiary sector. The latest DC INVERTER technology, in combination with the use of the eco-friendly fluid **R410A** (that preserves the environment) make for optimum efficiency (class A energy label) and exceptional performance levels. (Operates in hot mode down to -15 °C). Its flexibility and user friendliness, ability to retain a constant temperature, broad operating range and extremely silent running make it an exceptional device.



The **SX DC INVERTER** ceiling edge mounted split unit range is available with the ecologically friendly fluid **R410A**. This provides high energy efficiency, while preserving the ozone layer, and is easily recyclable. Its high density and high energy efficiency make for high performance coefficients, thereby providing significant energy savings.

The Inverter technology comprises:

- A DC INVERTER type variable power compressor that provides better regulation and temperature control.
- 30% energy saving.
- ultra silent operation.



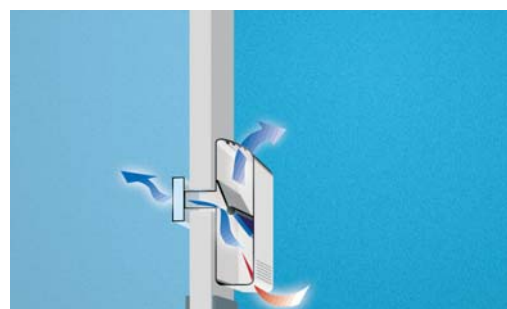
Enhancements with double automatic sweeping

SX DCI air conditioners have 2 motorised blowing flaps, one for the VERTICAL sweeping (top to bottom) function, and the other for HORIZONTAL sweeping (left to right) function. The treated air is therefore distributed completely uniformly throughout the room.



Innovation with two-way blowing

SX DCI air conditioners are also designed for air conditioning two neighbouring rooms if necessary. You need only install the connection kit provided as an accessory to distribute the treated air between the rooms, and install a discharge grille in the second air conditioned room. An adjustable flap is used to modify the air distribution between the two rooms.



Energy		Air conditioner
Manufacturer		Airwell
Outdoor unit		GC 9 DCI R410
Indoor unit		ST SX 9 DCI
Economic		A
Annual energy consumption, kWh in cooling mode		
<small>(the actual consumption depends on how the device is used and on the climate)</small>		
Cooling capacity	kW	2.5
Energy efficiency level <small>at full load (must be as high as possible)</small>		4.03
Type		
Cooling only		
Cooling and heating		←
Air cooling		←
Water cooling		
Heating capacity	kW	
Energy performance in heating mode		
<small>A: economic G: uneconomic</small>		
Noise		35
<small>dB(A)</small>		
A detailed information sheet is included in the brochure		
<small>Standard EN Air conditioner "Energy labelling" directive 2002/31/EC</small>		

■ SX DCI Indoor units



SX 9/12 DCI



SX 18 DCI



SX DCI, in horizontal position.

■ DCI Outdoor units

The heat-stable polyester material structure provides a reduction in the noise level, weight and a prolonged service life. The anticorrosion treatment with a High density powder paint coating ensures high resistance whatever the operating conditions.

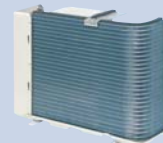


GCNG 9/12/18 DCI



❖ COMPRESSOR

A variable power DC INVERTER rotary type, this compressor provides high efficiency and increased acoustic isolation.



❖ CONDENSER

"Bluefin" hydrophilic treatment promotes the flow of condensates, while also providing corrosion protection to maintain performance levels and prolonging the service life.



❖ VENTILATOR MOTOR

A variable power DC INVERTER type, this high efficiency motor provides silent operation.



❖ PROPELLER

With 3 aerodynamic blades, the propeller offers better balance, enhances the exchange process and makes silent operation possible.

Its operational flexibility, user friendliness, ability to rapidly reach the temperature setting, silent operation, optimum ambient temperature retention and energy saving make **SX DCI** an exceptional range.

■ Infrared remote control and control panel

Automatic Cold/Hot regulation.

- 3 ventilation speeds.
- Automatic ventilation.
- I FEEL function.
- Night-time slow running.
- Double sweeping of treated air: horizontal and vertical.
- Dehumidification.
- 2 programming ranges: week & week-end.
- Back-lit LCD screen.



"I feel" sensor
 On/Off
 Operating modes
 Room temperature
 Automatic air flow sweeping
 Night-time slow running
 Confirm programming parameters
 Cancel timer parameters
 3 fixed ventilation speeds + one automatic speed
 "I feel" function
 Temperature adjustment
 Timer selection
 On/Off times adjustment
 Child lock

INVERTER RANGE



SX DC INVERTER Series

SX 9 DC INV

SX 12 DC INV

SX 18 DC INV

Heating capacity ⁽¹⁾	kW	3.4 (1.5-5)	4.3 (1.5-5.5)	6 (1.5-7.2)
Power input	kW	0.91	1.26	1.75
COP / Energy label		3.72 / A	3.41 / B	3.43 / B

Cooling capacity ⁽²⁾	kW	2.5 (1.4-3.6)	3.5 (1.5-4.6)	5 (1.5-6)
Power input	kW	0.62	1	1.65
EER / Energy label		4.03 / A	3.50 / A	3.03 / B

INDOOR UNITS

ST SX 9 DCI

ST SX 12 DCI

ST SX 18 DCI

Airflow (LS/NS/HS)	m³/h	300/350/400	300/400/450	600/750/870
Acoustic pressure to 1m (LS/NS/HS) ⁽³⁾	dB(A)	35/37/39	38/41/45	45/48/51
Dehumidification	l/h	1	1.5	2
Net Weight	kg	21	22	30
Dimensions (WxDxH)	mm	820x190x630	820x190x630	1200x190x630

OUTDOOR UNITS

GC 9 DCI

GC 12 DCI

GC 18 DCI

Airflow	m³/h	1780	1780	2160
Acoustic pressure to 1 m	dB(A)	51	52	53
Compressor type		Rotary DC Inverter	Rotary DC Inverter	Scroll DC Inverter
Operating limits Winter / Summer		- 10 °C / + 43 °C		
Net Weight	kg	40	40	43
Dimensions (WxDxH)	mm	795x290x610	795x290x610	795x290x610

LINKING SPECIFICATIONS BETWEEN INDOOR AND OUTDOOR UNITS

Power supply

Power supply side		Indoor	Indoor	Indoor
Power cable section	mm²	3x1.5	3x1.5	3x2.5
Fuse am	A	15	15	20
Electrical connection Ind./Out.	mm²	4x1.5	4x1.5	4x2.5

Linking pipes

Max. length	m	20	20	30
Max. height	m	10	10	10
Suction pipe diameter	Inches	3/8"	3/8"	1/2"
Liquid pipe diameter	Inches	1/4"	1/4"	1/4"

(1) Nominal heating capacity: international conditions 20°C/12°C damp - Outdoor air: 7°C/6°C damp. (2) Nominal cooling capacity: international conditions (Standards NF EN 255.2 / 814.2) - 27°C/19°C damp - Outdoor air: 35°C/24°C damp. (3) Overall acoustic pressure in dB(A) (1 m) under nominal conditions: external unit in a free field over a reflecting plane - Indoor unit: installed in an average sized room, (PV-0.5s reverberation).

Airwell



ACE MARKETING - 1 bis. av. du 8 mai 1945 - Saint-Quentin-en-Yvelines
F - 78284 Guyancourt Cedex
Fax : +33 (0) 1 39 44 65 17 - Tél. : +33 (0) 1 39 44 78 00
www.airwell.com

your approved *Airwell* distributor

